

REMOVING/UNINSTALLING THE BSDI WINDOWS SOFTWARE

This document will outline the steps necessary to remove/uninstall the BSDI Windows Software

You will only ever want to remove/uninstall the BSDI Windows Software from your PC due to either problems with the software installation, or if you were permanently removing the software from the computer.

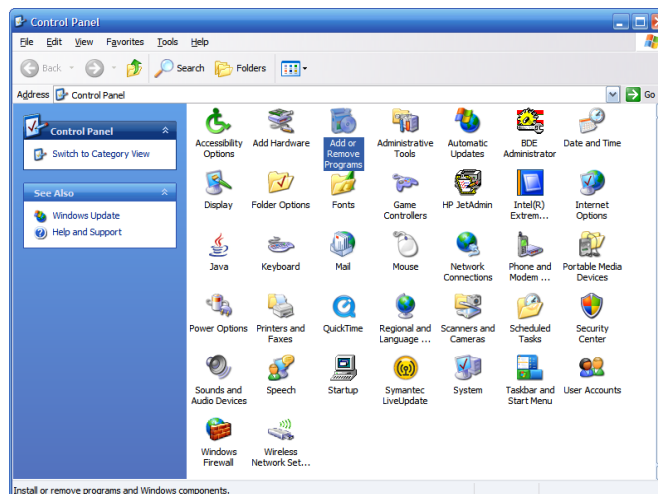
Please note that removing the BSDI Windows Software will remove your Database, and therefore you will loose all of your clients' data. (If you intend to reinstall the software you MUST take a backup of your database prior to the software removal process. Please see the BSDI Backup Guides available on our website: <http://bsdi.cc/support.htm>)

The uninstall process comprises of number of steps which involves the removal of three pieces of software, and the deletion of two folders/directories.

- The software that you will remove:
 - **BSDI Client Software.**
 - **BSDI Database.**
 - **Microsoft SQL Server 2005 (SQL Server Express).**
 - **Microsoft SQL Server Native Client.**
 - **Microsoft .NET framework 2.0.**
- The two folders/directories that you will remove:
 - **C:\Program Files\BSDI**
 - **C:\Program Files\Microsoft SQL Server**

Procedure

1. Click the Windows “Start” button, and click on the “Control Panel” link that appears in the displayed dialog window. (If you are running Windows 2000, you will have to click on “Settings” menu option first, and then you will click on the “Control Panel” option).



2. Click on the “Add/Remove Programs” icon.

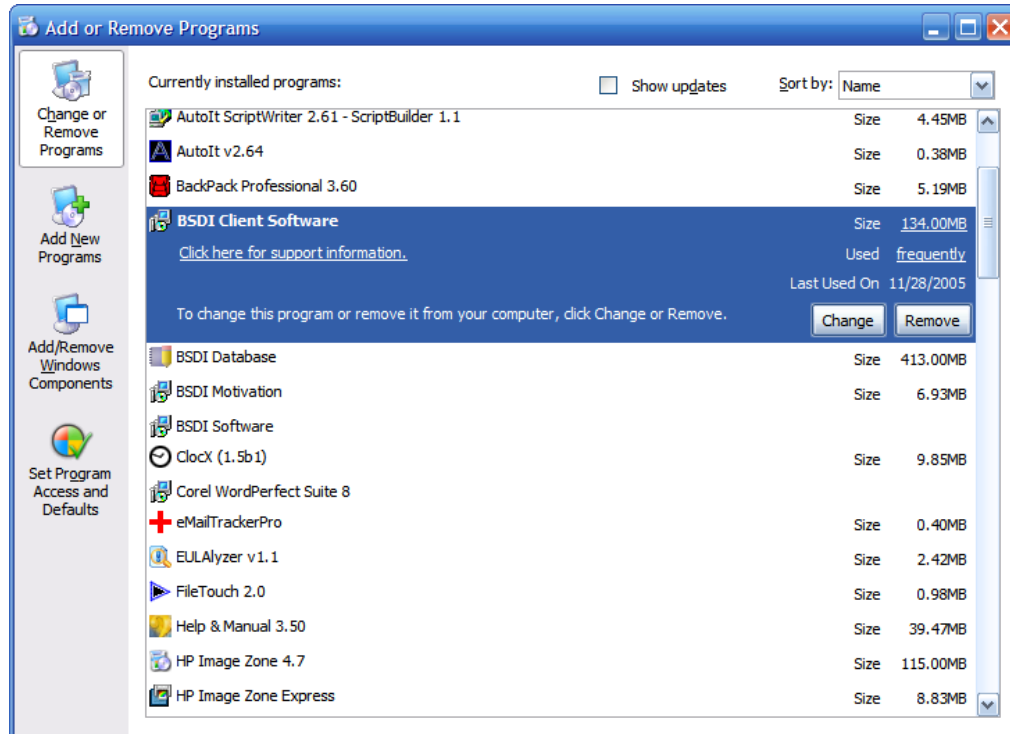
PO BOX 357 • CALIFON, NJ • 07830

Phone: (908) 832-2691

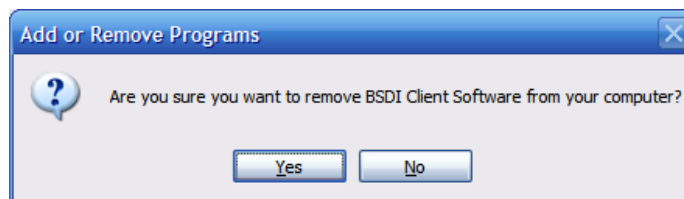
Email : support@bsdiweb.com

BSDI Client Software Removal/Uninstall:

3. The “Add/Remove Programs” dialog window will open. Navigate down the window until you locate “BSDI Client Software”. Click on “BSDI Client Software” to select it.



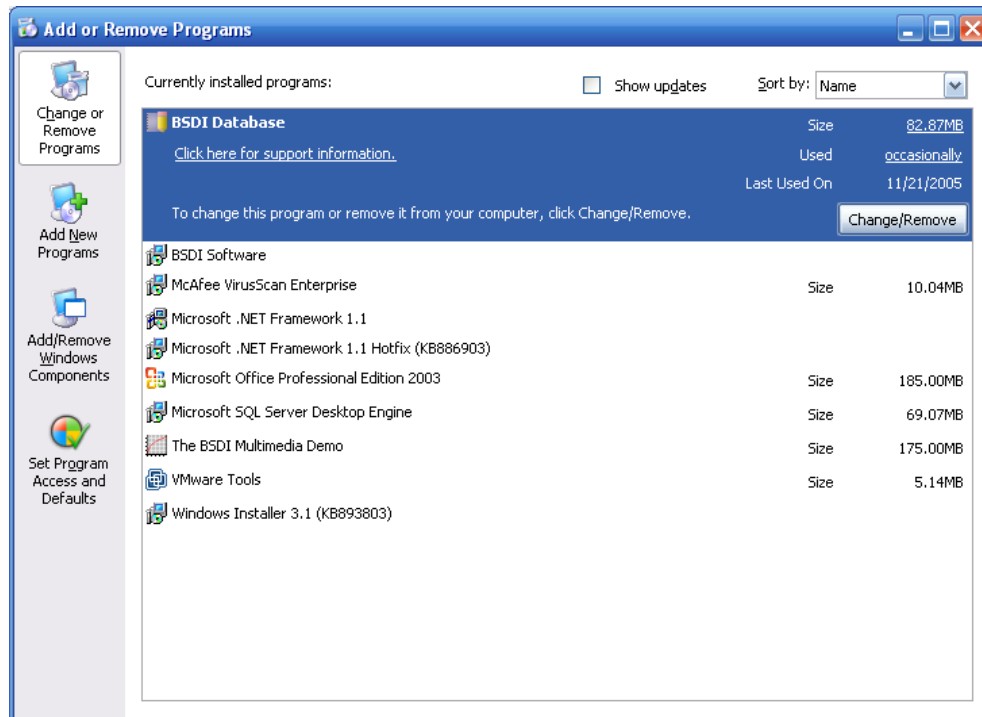
4. Click on the “Remove” button.



5. Click “Yes” to proceed.
6. When the remove/uninstall is complete the window will close.

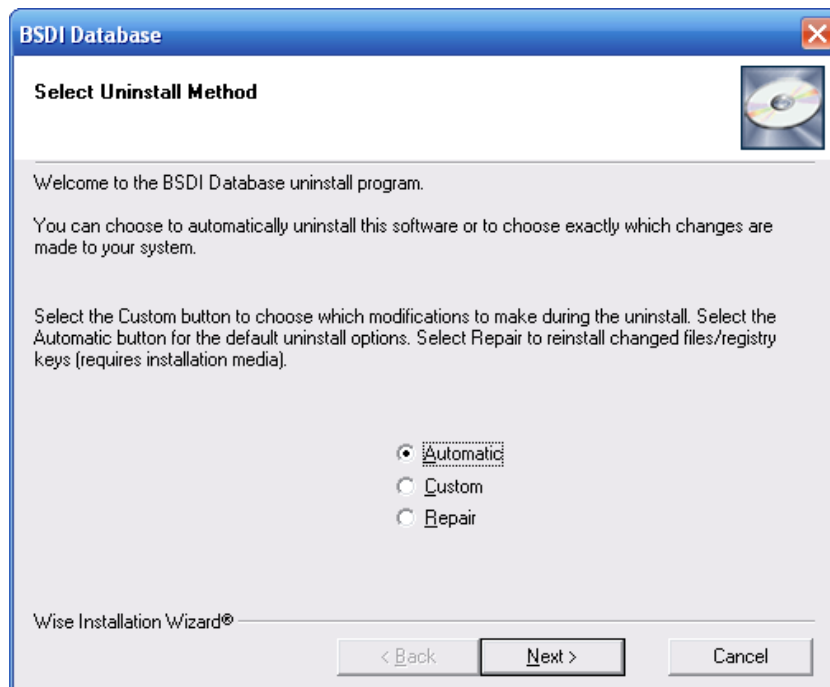
BSDI Database Removal/Uninstall:

7. In the “Add/Remove Programs” dialog window, navigate down the window until you locate “BSDI Database”. Click on “BSDI Database” to select it.

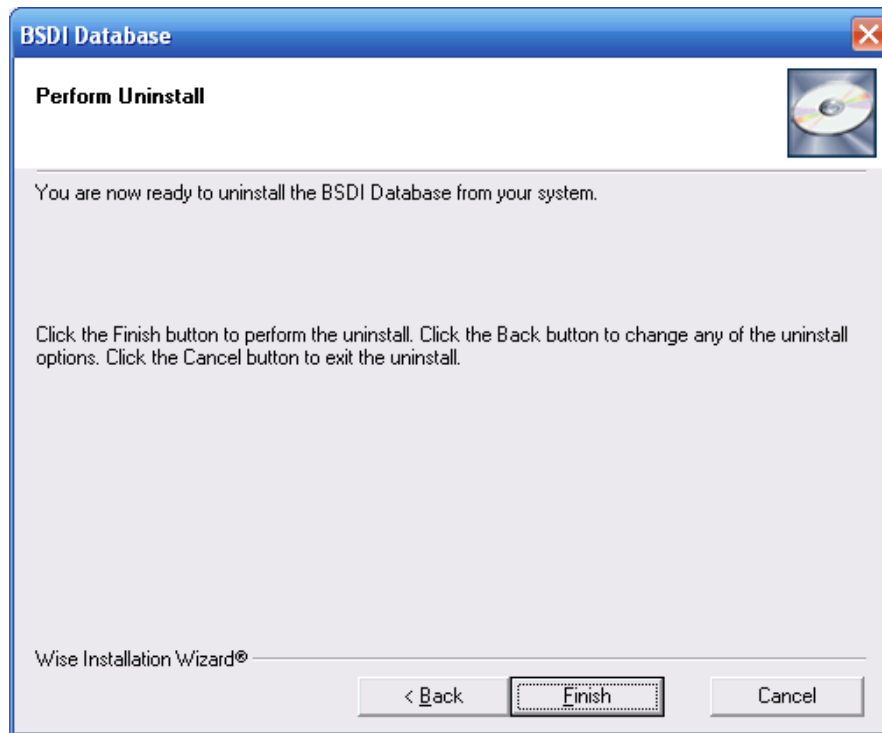


8. Click on the “Remove” button.
9. The version of the BSDI Database installed will determined the removal steps. If you have a database version installed prior to version 10.11.0, please skip to item 13.

BSDI Database Removal/Uninstall:



10. Select “Automatic” click “Next”.

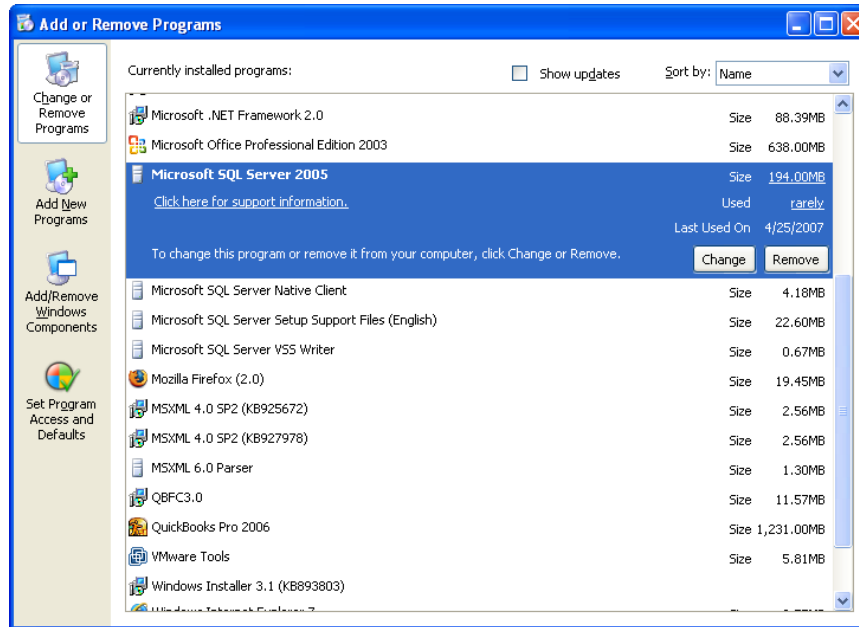


11. Click “Finish” to begin the uninstall process.
12. When the uninstall process is complete the window will close.

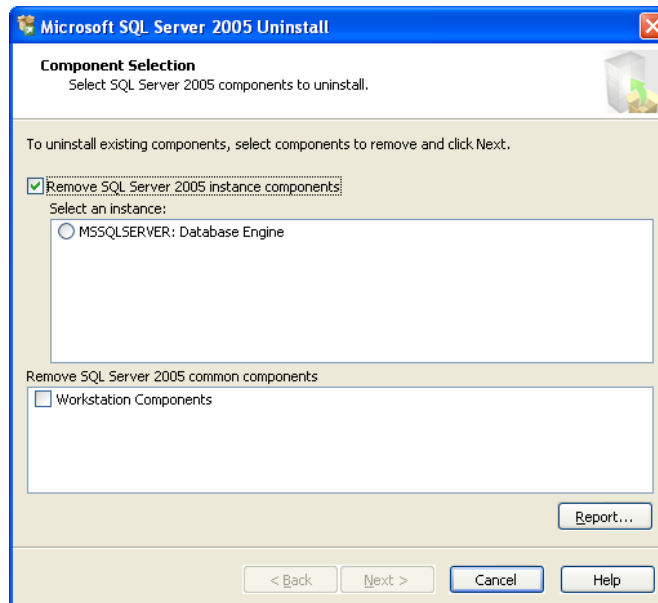
Microsoft SQL Server 2005 (SQL Server Express) Removal/Uninstall:

Note: Only remove the Microsoft SQL Server 2005 if no other programs on your PC use the application/software.

1. In the “Add/Remove Programs” dialog window, navigate down the window until you locate “Microsoft SQL Server 2005”. Click on “Microsoft SQL Server 2005” to select it.

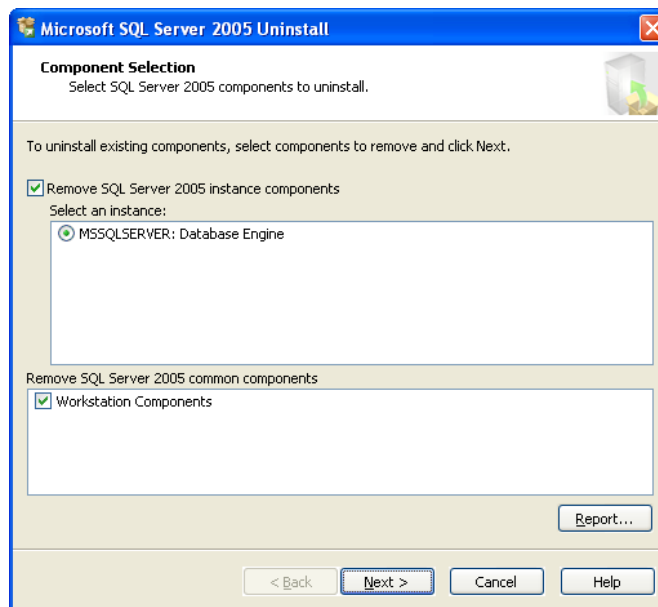


2. Click on the “Remove” button.

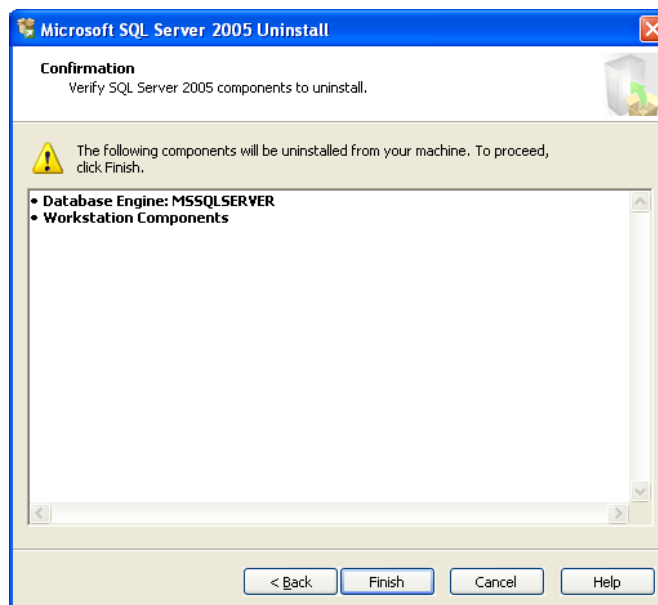


3. Click the radio button next to “MSSQLSERVER: Database Engine”

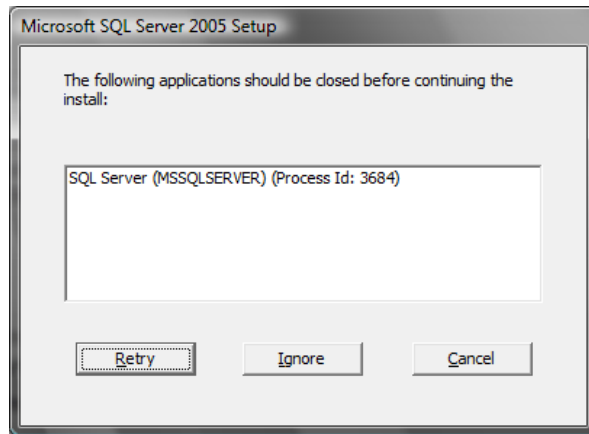
- Click the checkbox next to “Workstation Components”.



- Click the 'Next' button.



- To proceed click the 'Finish' button. Windows XP users can skip to point 20. below.
- Windows Vista users will be present with a Microsoft SQL Server 2005 dialog window informing you that the “SQL Server (MSSQLSERVER)” application is running and that this needs to be closed before proceeding. This is a Service that runs in the background which the BSDI database required.

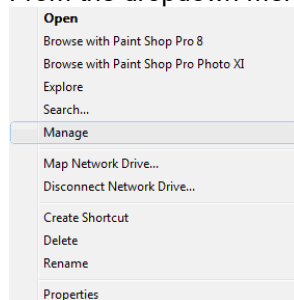


8. You will need to stop this service; you will need to follow the steps below.
9. Right click on the "My Computer" icon on your desktop, or by clicking on the "Start" button.

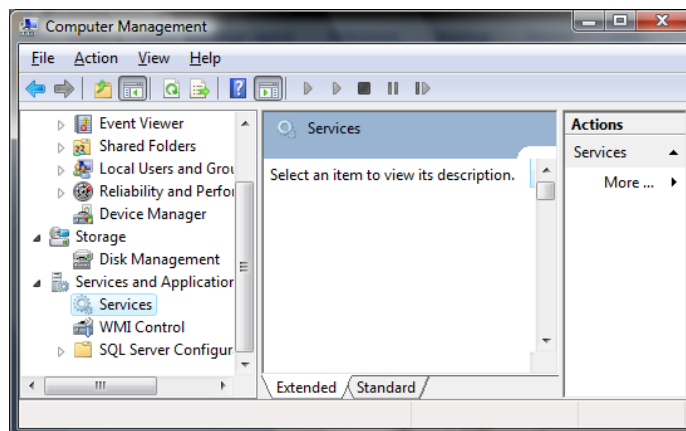


Computer

10. From the dropdown menu select "Manage"

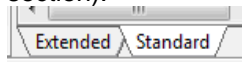


11. In the Computer Management dialog window, click on "►" next to "Services and Applications".

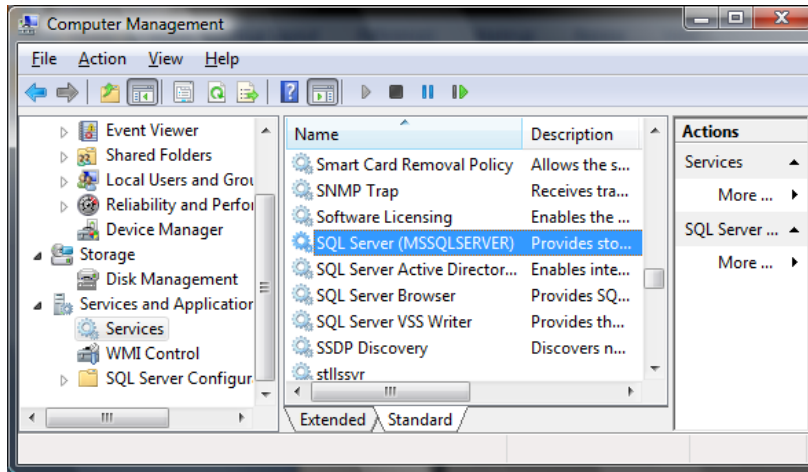


12. Click on "Services"

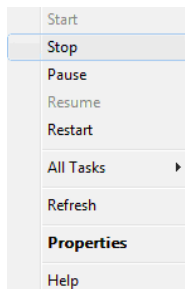
13. Click on the “Standard” tab in the “Services” section of the dialog window. (the middle section).



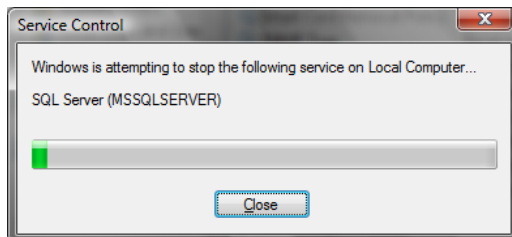
14. You will now see a list of services in alphabetical order. Scroll down the list until you come to a service called “SQL Server (MSSQLSERVER)”.



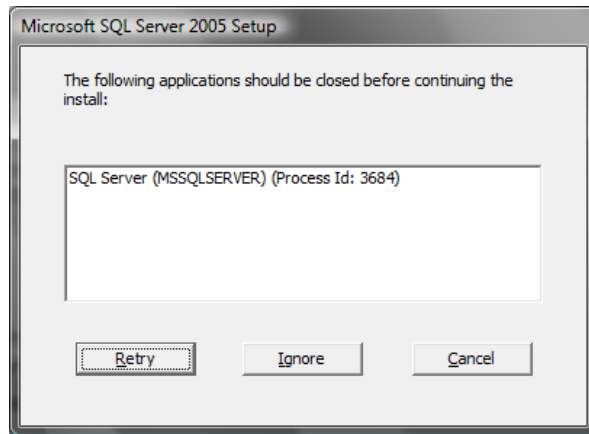
15. Right click the “SQL Server (MSSQLSERVER)” service.



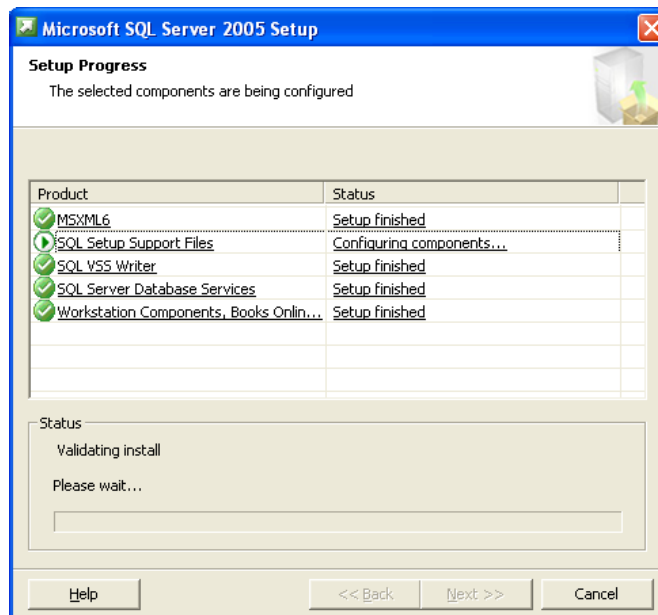
16. From the dropdown menu select “Stop”



17. The service will be stopped.
18. Close the Computer Management dialog window.



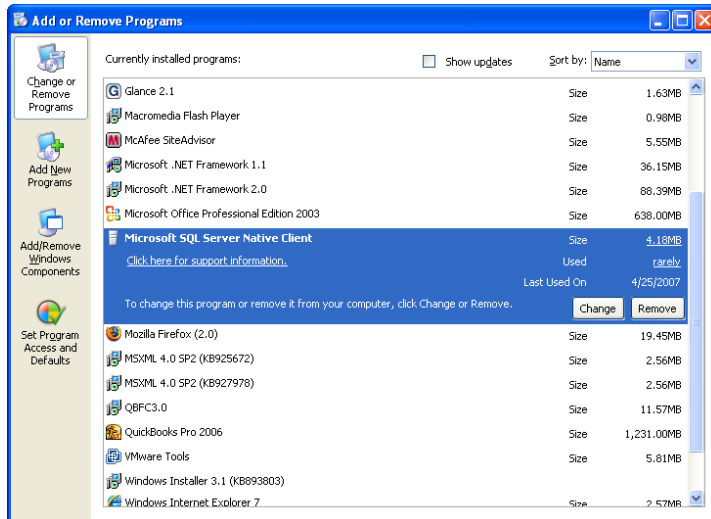
19. Click the “Retry” button in the Microsoft SQL Server 2005 dialog window.
20. The software removal/uninstall will proceed.



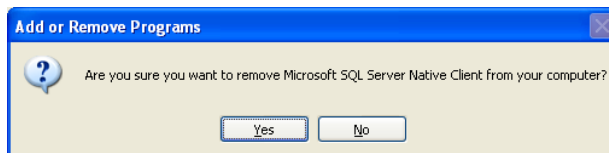
21. The setup window will close when the removal/uninstall completes.

Removing Microsoft SQL Server Native Client:

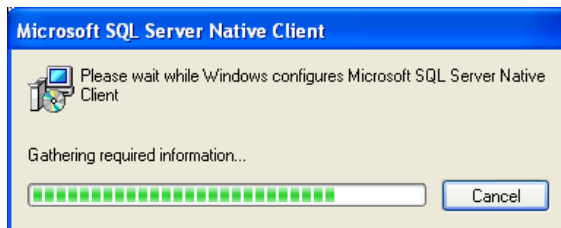
1. In the “Add/Remove Programs” dialog window, navigate down the window until you locate “Microsoft SQL Server Native Client”. Click on “Microsoft SQL Server Native Client” to select it.



2. Click on the “Remove” button.



3. Click the 'Yes' button to proceed with the removal/uninstall.

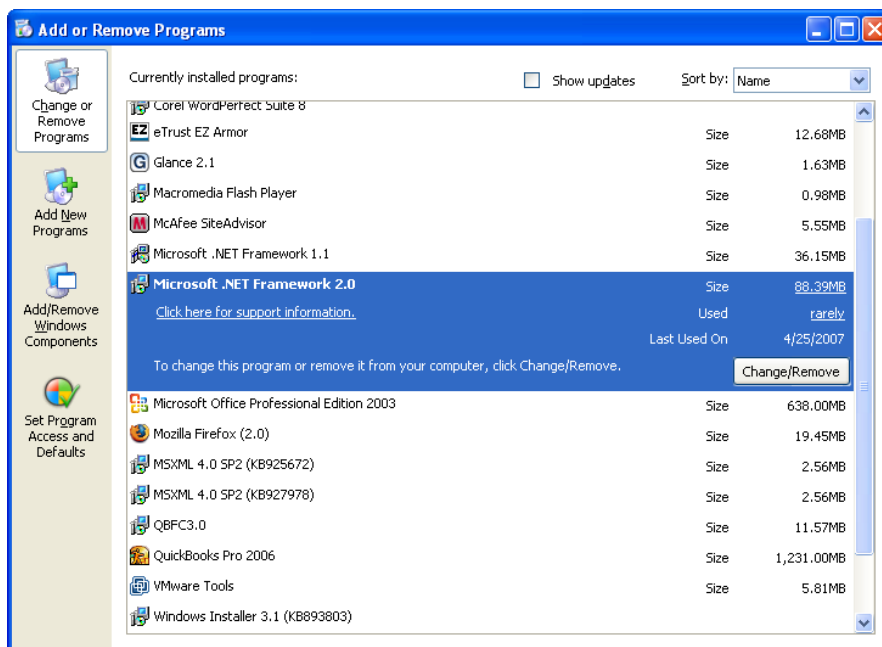


4. The window will close when the removal/uninstall completes.

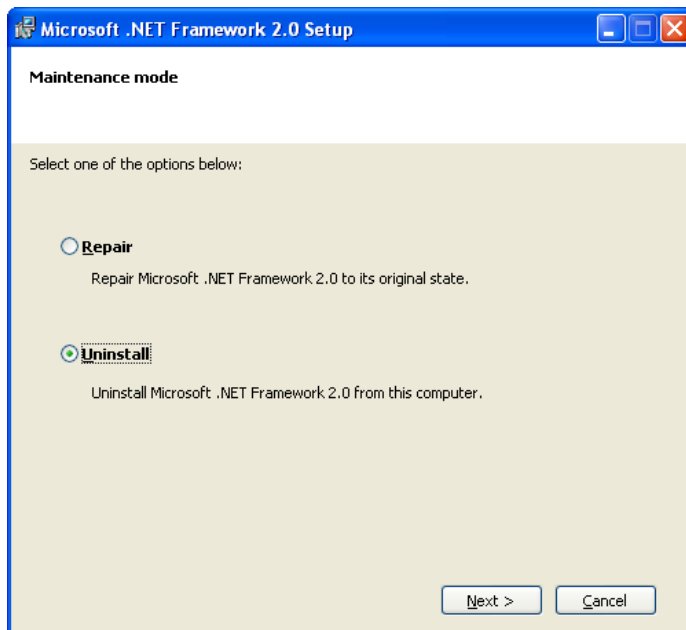
Microsoft .NET framework 2.0 Removal/Uninstall:

Note: Only remove the Microsoft .NET framework 2.0 if no other programs on your PC use the application/software. Please note that it is not essential to uninstall the Microsoft .NET framework 2.0 for the removal of the BSDI software.

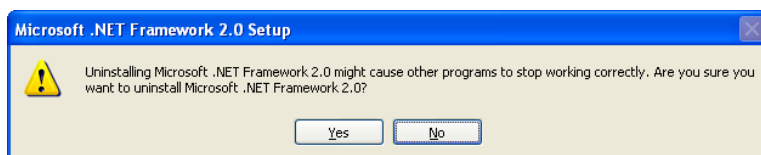
1. In the “Add/Remove Programs” dialog window, navigate down the window until you locate “Microsoft .NET framework 2.0”. Click on “Microsoft .NET framework 2.0” to select it.



2. Click on the “Remove” button.

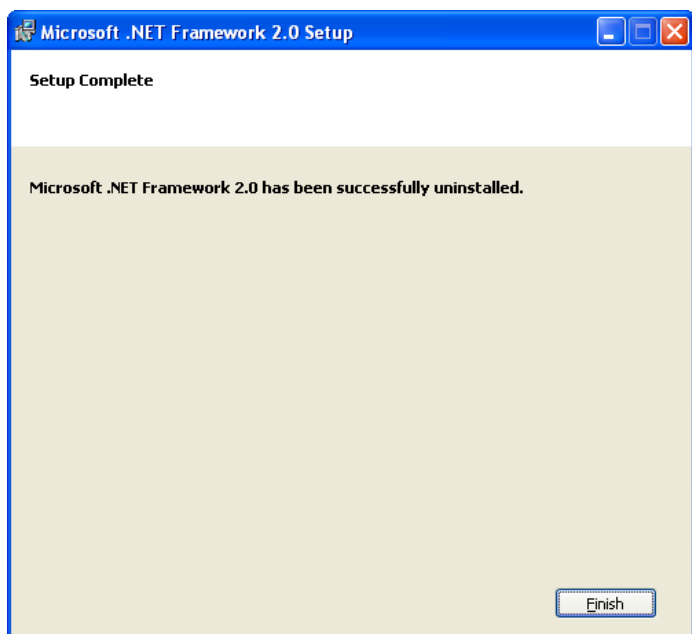


3. Click the radio button next to “Uninstall”, then click the “Next>” button.



4. Click the “Yes” button to proceed with the removal/uninstall.

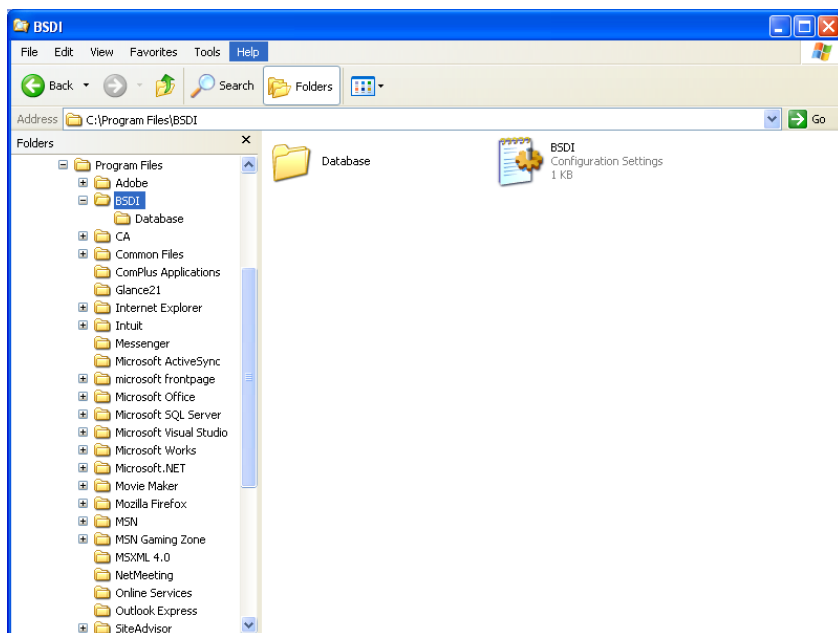
PO BOX 357 • CALIFON, NJ • 07830
Phone: (908) 832-2691
Email : support@bsdiweb.com



5. When the removal/uninstall completes, click the 'Finish' button.

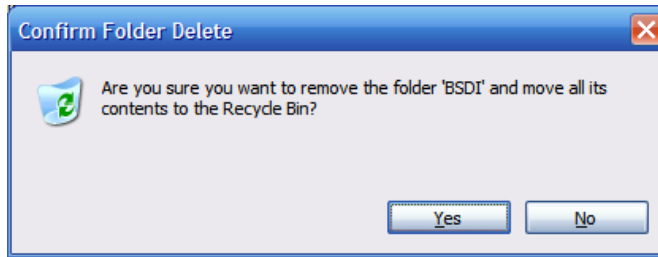
Removing/Deleting file directories:

1. Right click on the "My Computer" icon on your desktop, or by clicking on the "Start" button.
2. Select "Explore" from the dropdown menu.
3. Navigate to "C:\Program Files\BSDI"

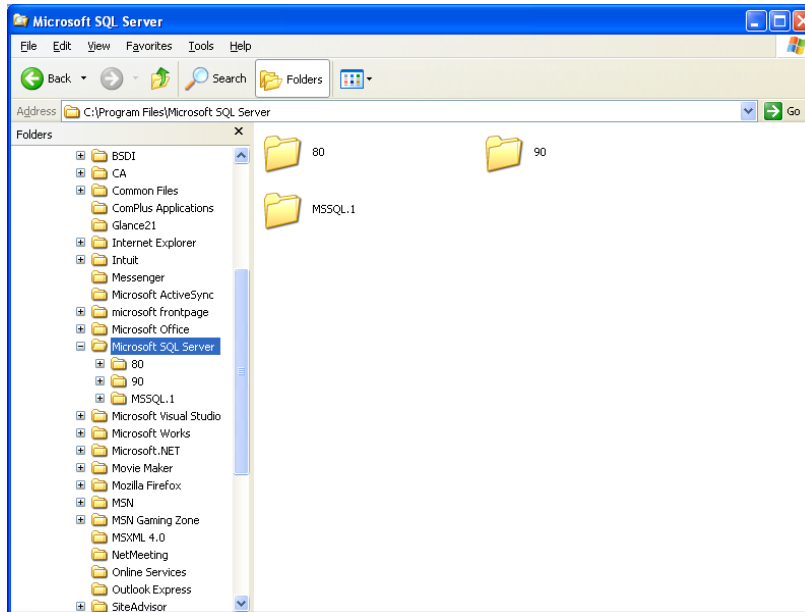


4. Click on "C:\Program Files\BSDI", so it is highlighted.

5. Press the “Delete Key” to delete the folder/directory.



6. Click “Yes” to confirm the deletion.
7. Navigate to “C:\Program Files\Microsoft SQL Server” (This folder/directory may already have been uninstalled by the removal of the Microsoft SQL Server Desktop Engine).
Please Note: Only remove the “C:\Program Files\Microsoft SQL Server” folder if no other programs on your PC use the Microsoft SQL Server 2005 application/software.



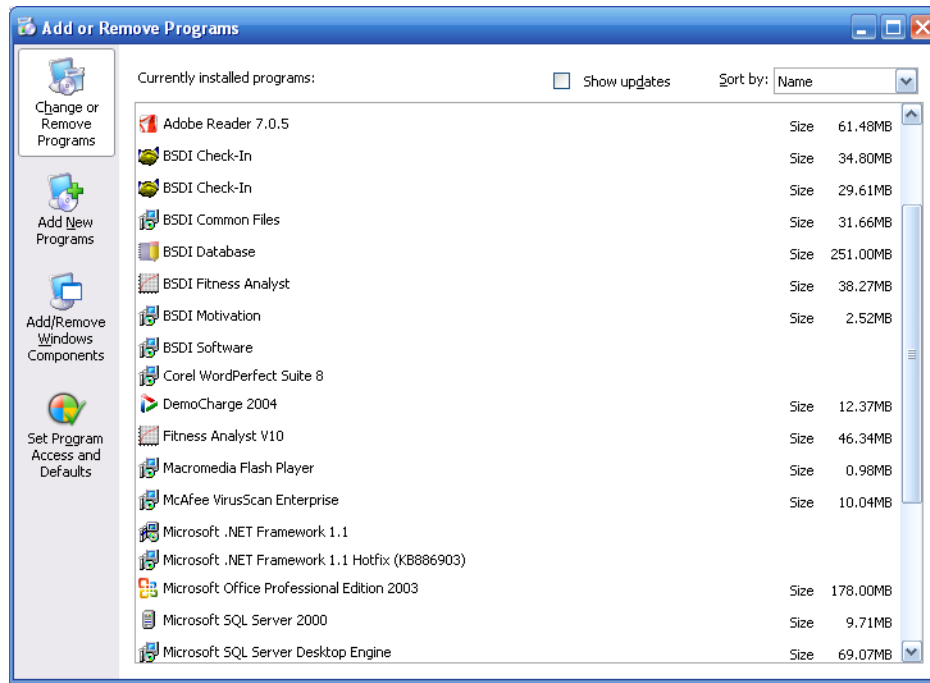
8. Click on “C:\Program Files\Microsoft SQL Server”, so it is highlighted.
9. Press the “Delete Key” to delete the folder/directory.



10. Click “Yes” to confirm the deletion.
11. Close the “Windows Explorer” window.
12. You have now successfully completed the removal/uninstall of the BSDI Windows Software.

Additional Steps for users running BSDI Client Versions prior to version V10.7.2

1. You may notice in the “Add/Remove Programs” window additional entries for BSDI Check-In, and/or Fitness Analyst depending on how many previous versions of the client software you have installed.



2. From the “Add Remove Programs” listing, you will need to remove/uninstall the following programs:
 - a. BSDI Check-In
 - b. BSDI Common Files
 - c. BSDI Fitness Analyst
 - d. Fitness Analyst V10
3. If an item above appears more than once, ensure that you remove each occurrence.
4. **Please note:** You may see addition entries, not listed above **DO NOT REMOVE** these entries:
 - a. **BSDI Motivation:** Only present if you are running BSDI Motivation software.
 - b. **BSDI Software:** Only present if you still have our Version 9 suite of software (Fitness Publisher/Retention Manager) installed.