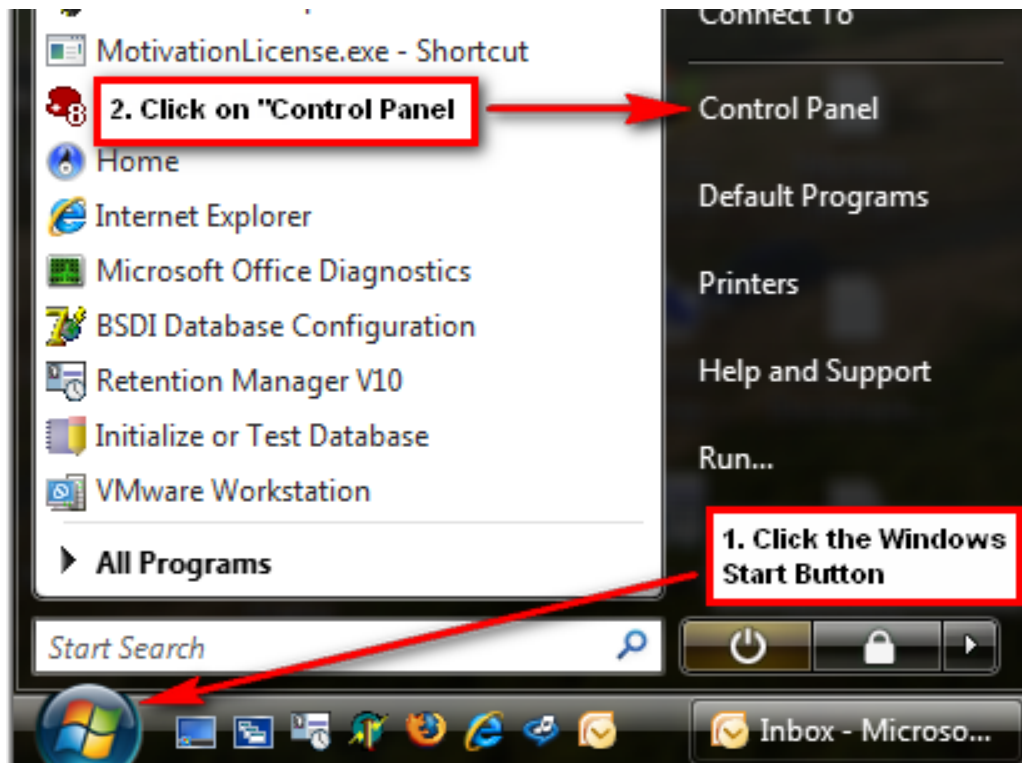


## How to check if whether you have Windows 7/Vista 32 Bit, or 64 Bit, Operating System

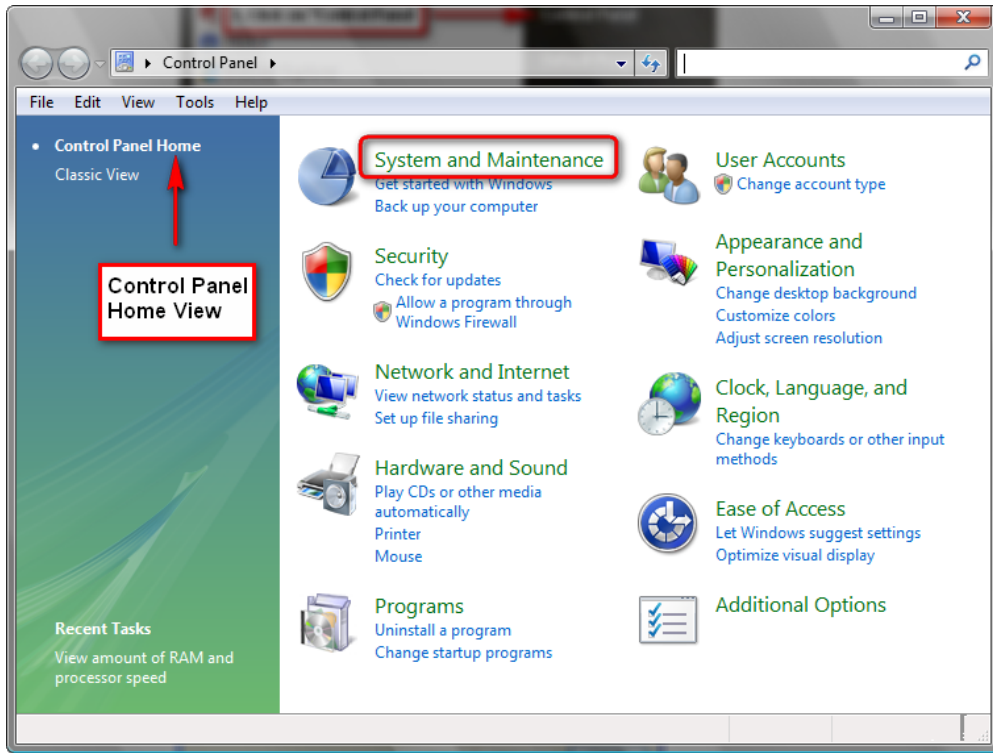
BSDI's Windows software will run on both the **Windows 7/Vista 64 Bit Operating System**, but will run without any problems on the **Windows 7/Vista 32 Bit Operating System**. Therefore, before BSDI can send you an evaluation/installation CD we need to confirm which Windows 7/Vista version that you are running. The instructions below will provide you with step-by-step instructions on how to check your version of Windows 7/Vista.

1. Click on the Windows "Start" button.

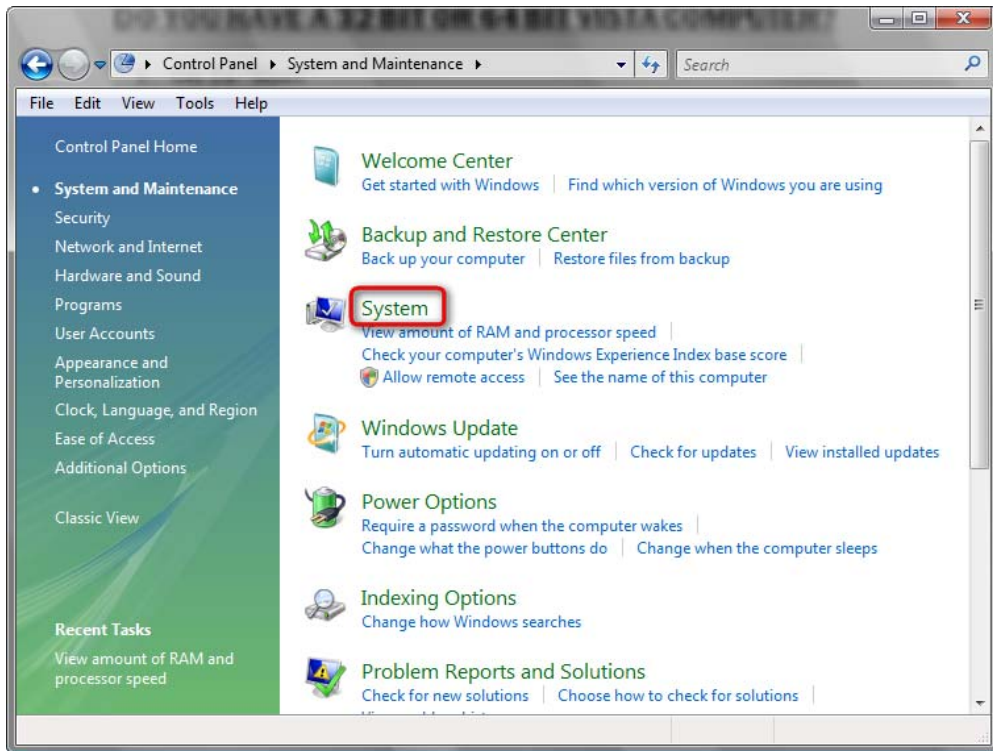


2. Select "Control Panel" from the Start Menu.

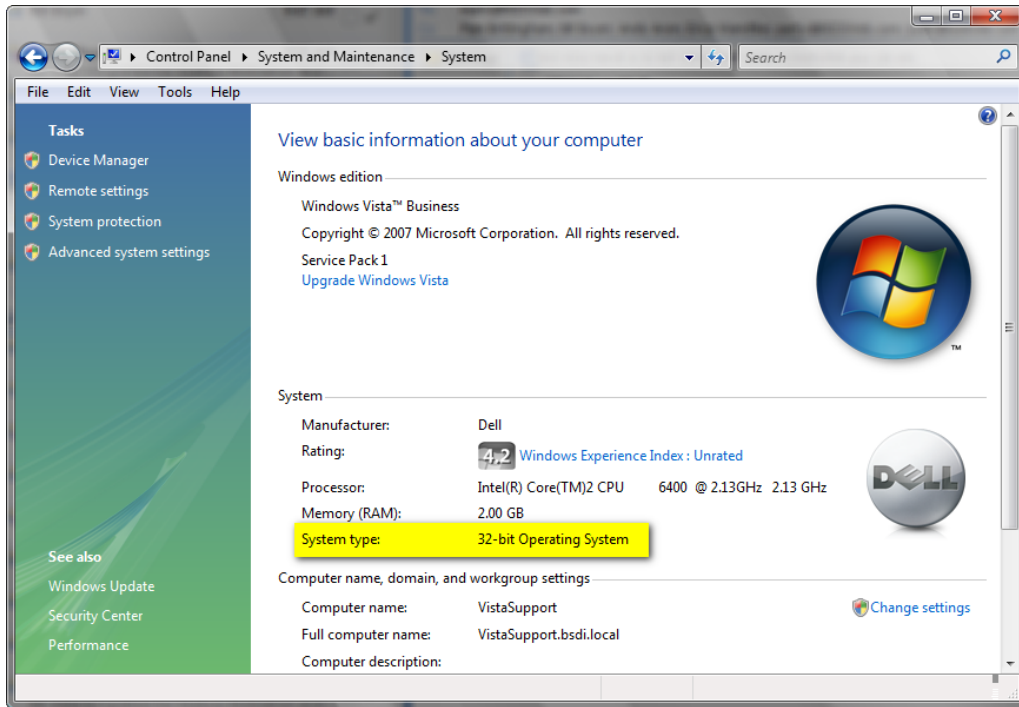
### Control Panel Home View



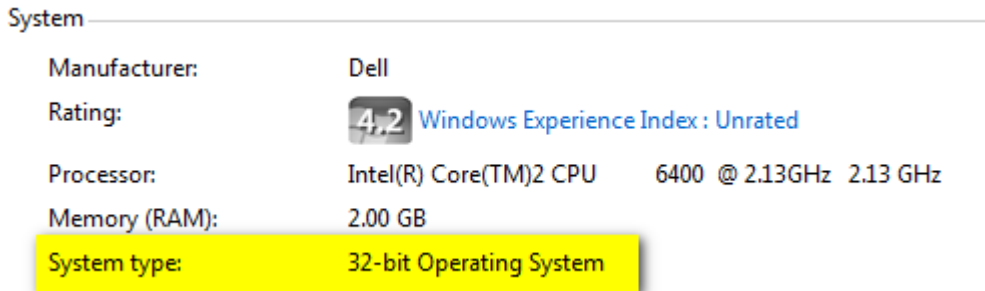
1. Click on the "System and Maintenance" link.



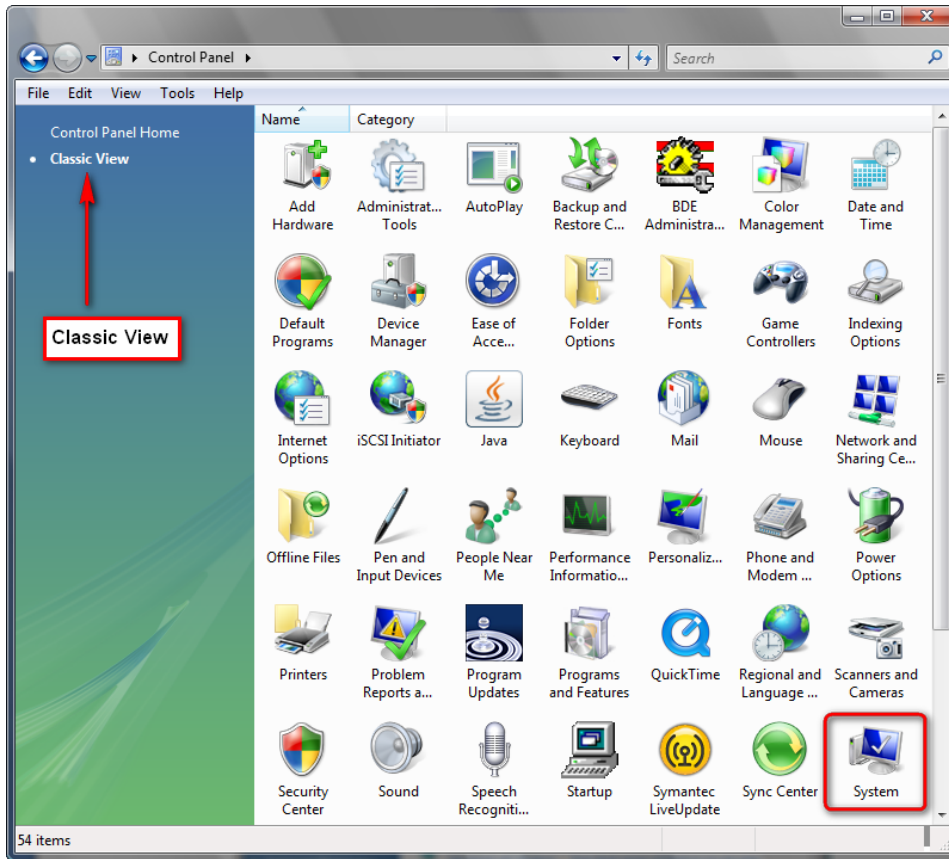
2. Click on the "System" link.



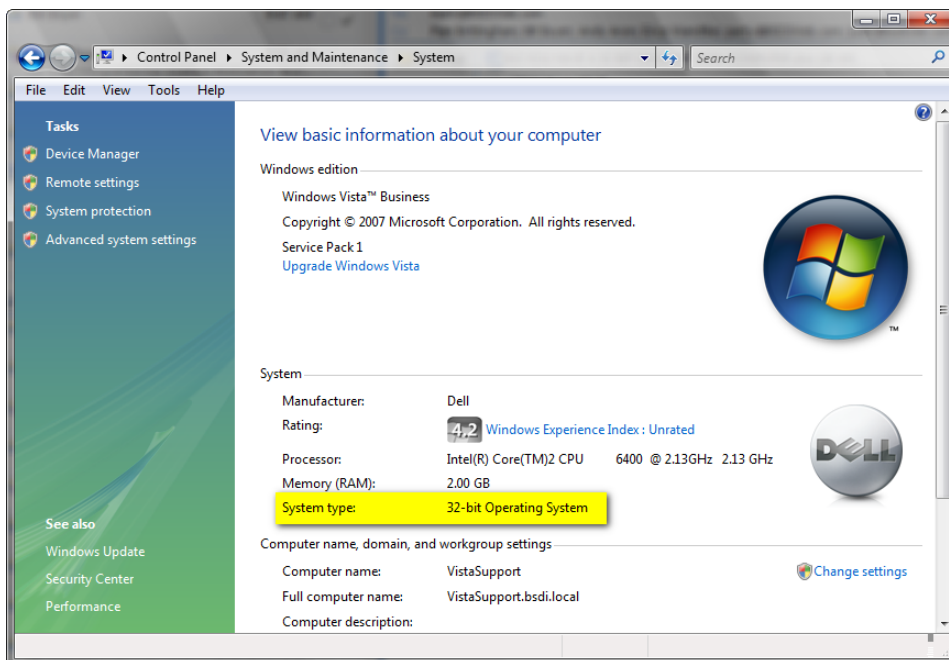
3. In the System section you will see System type listed. It will be either:
  - a. 32-bit Operating System, or
  - b. 64-bit Operating System



## Classic View



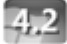
1. Click on the "System" icon.



2. In the System section you will see System type listed. It will be either:
  - a. 32-bit Operating System, or
  - b. 64-bit Operating System

System

---

Manufacturer:	Dell
Rating:	 4.2 Windows Experience Index : Unrated
Processor:	Intel(R) Core(TM)2 CPU 6400 @ 2.13GHz 2.13 GHz
Memory (RAM):	2.00 GB
System type:	32-bit Operating System